

# ComReg NGN Forum – 8 March 2007

**Ittai Hershman, BT Wholesale**

**Director, 21CN Commercial Development**

[Ittai.Hershman@BT.COM](mailto:Ittai.Hershman@BT.COM)

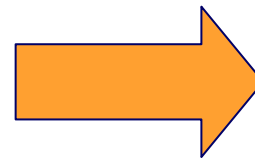


# CAUTIONARY STATEMENT

The details of BT's 21st century network are still in the process of development and the subject of consultation.



# BT's 21CN Strategy

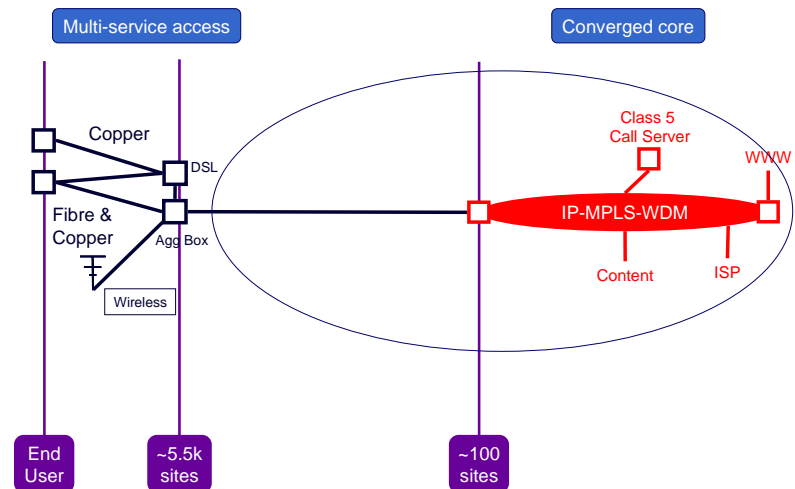
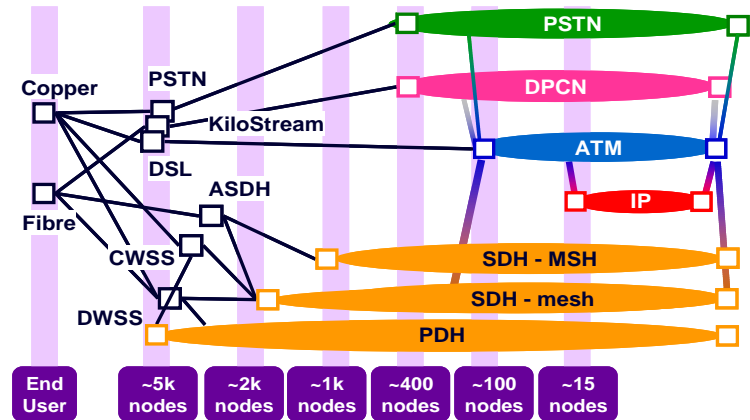


**Not simply network transformation...a radical overhaul of BT's business and systems**

**A world first for a telecommunications company**

# The 21CN UK Network Transformation

- Ethernet for multi-service aggregation & backhaul; IP/MPLS for core routing
- Separation of services from the network using common capability building blocks for global deployment
- Initial services in the UK is PSTN, Broadband, Ethernet for ~30 million lines
- Equality of Access for BT's wholesale customers for SMP products & services



Current thinking. No implementation assurances

# BT Doesn't Have All the Answers

- Consult21 launched Summer 2004
- Remit is open and transparent consultation with wholesale customers (CPs)
- Director recruited from a CP
- 10 Working Groups, including:
  - Product Migration from 20CN to 21CN (E.g. PSTN Interconnect, Broadband, Ethernet)
  - 21CN Migration Management
  - Communications
- Each WG has BT and Industry Co-Chairs
- Industry Steering Board (Ofcom monitors)
- All proceedings published on the Internet



# Regulatory Certainty is Key

- NGNs are driven by cost savings
  - No one can “build it and they will come” on revenue bet
  - Investment requires demonstrable shareholder value
- Regulators face a difficult challenge
  - NGNs are disruptive to traditional boundaries
  - NGNs challenge past regulatory assumptions (e.g. thin & disperse vs. fat & fewer interconnect)
- Regulation needs to become simpler
  - Requires collaboration amongst incumbents, regulators and communications providers.

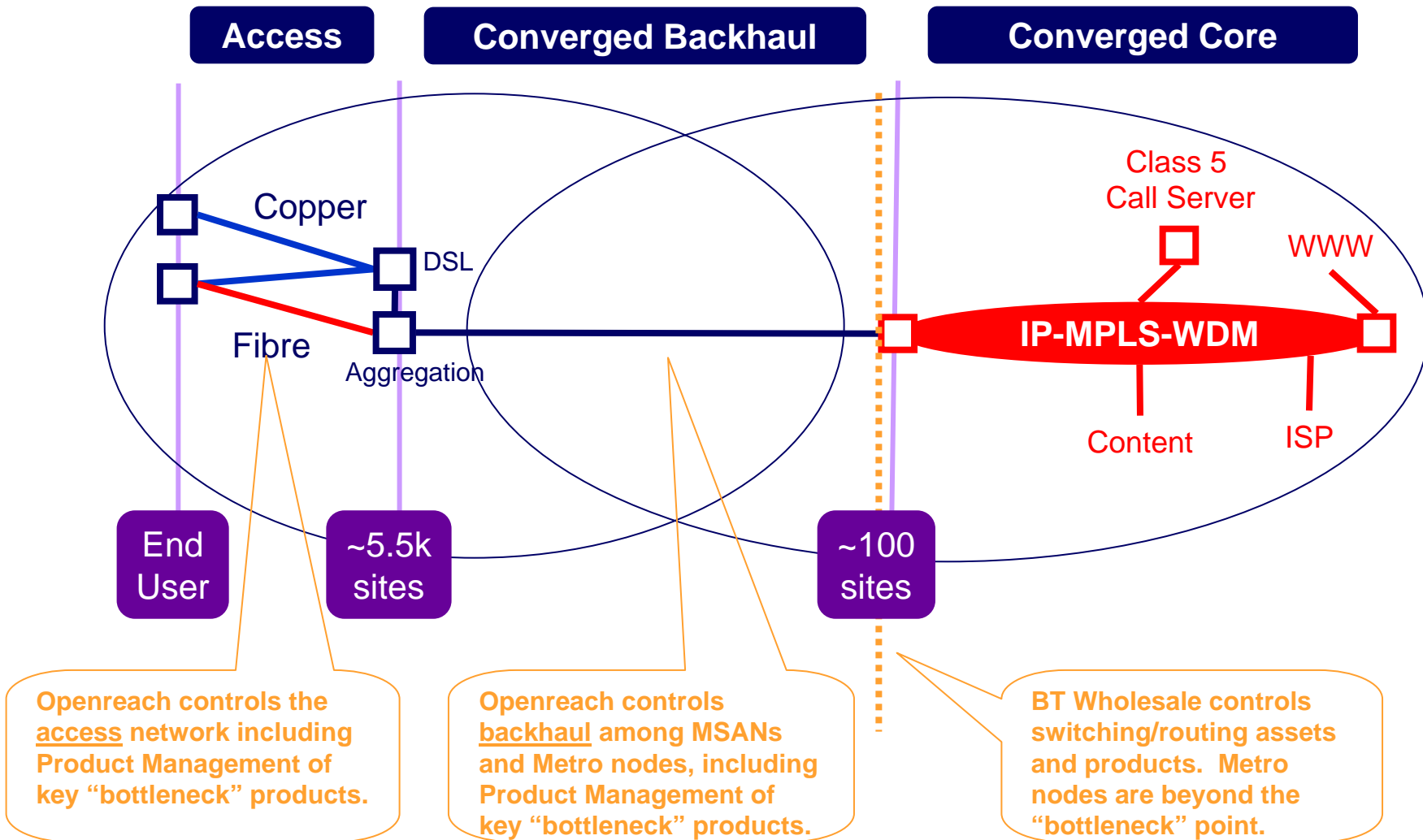
# Regulatory Context for BT's NGN in the UK

- Ex-ante regulation
  - Applies to defined markets where BT has SMP
  - Provision of network access/interconnect, non-discrimination, cost-oriented prices, etc.
- BT's Undertakings – NGN-specific section
  - No foreclosure of network access without consultation
  - Charges to be based on efficient network design
  - Network access to be provided on Equivalence basis
  - Industry group to agree transition to NGN interconnect
  - Compensation arrangements

BT's NGN comprises packet-based products delivered to/from the exchange through the core network; it is access medium agnostic.

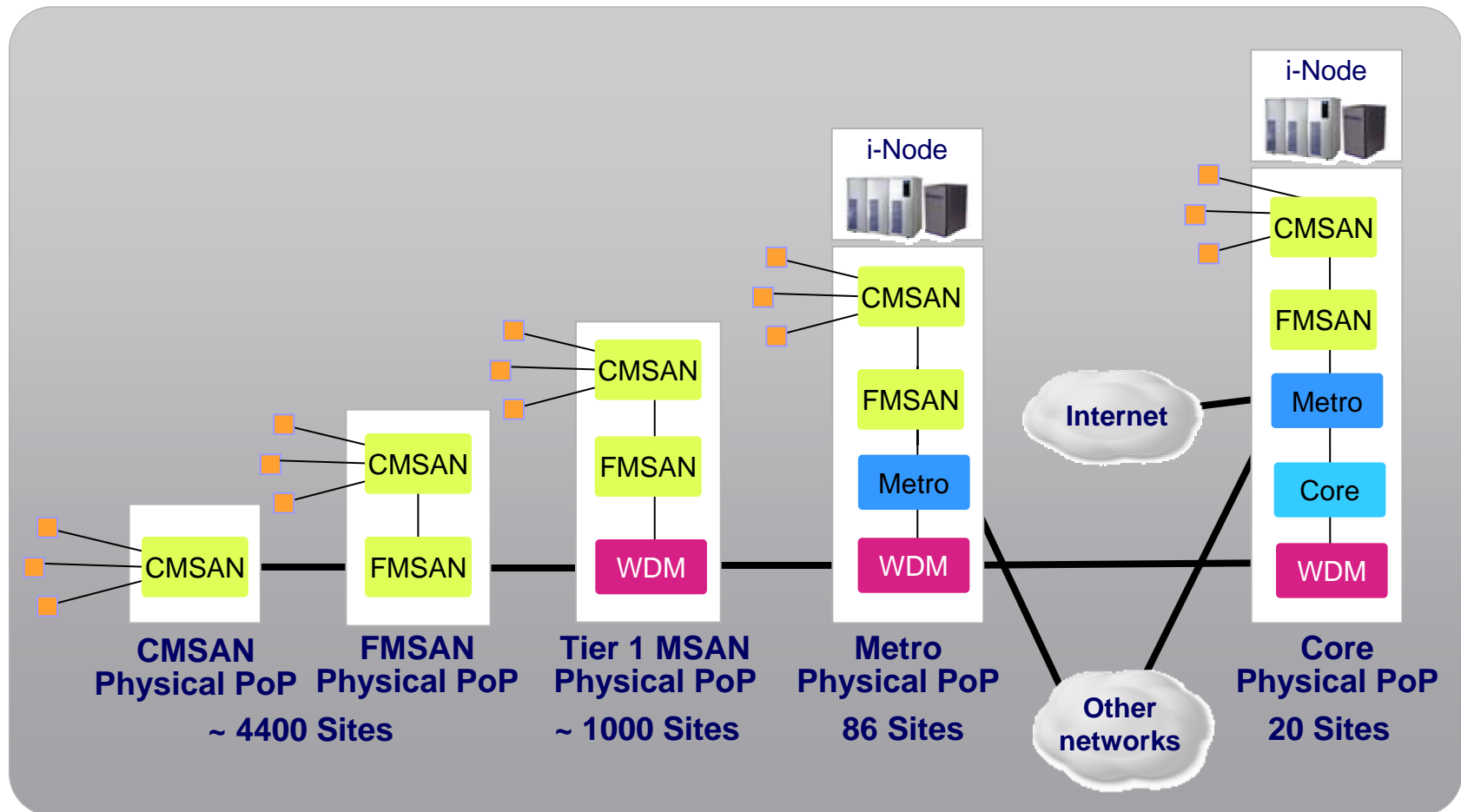


# Our Simplified Network – 21CN





# 21CN Network Architecture



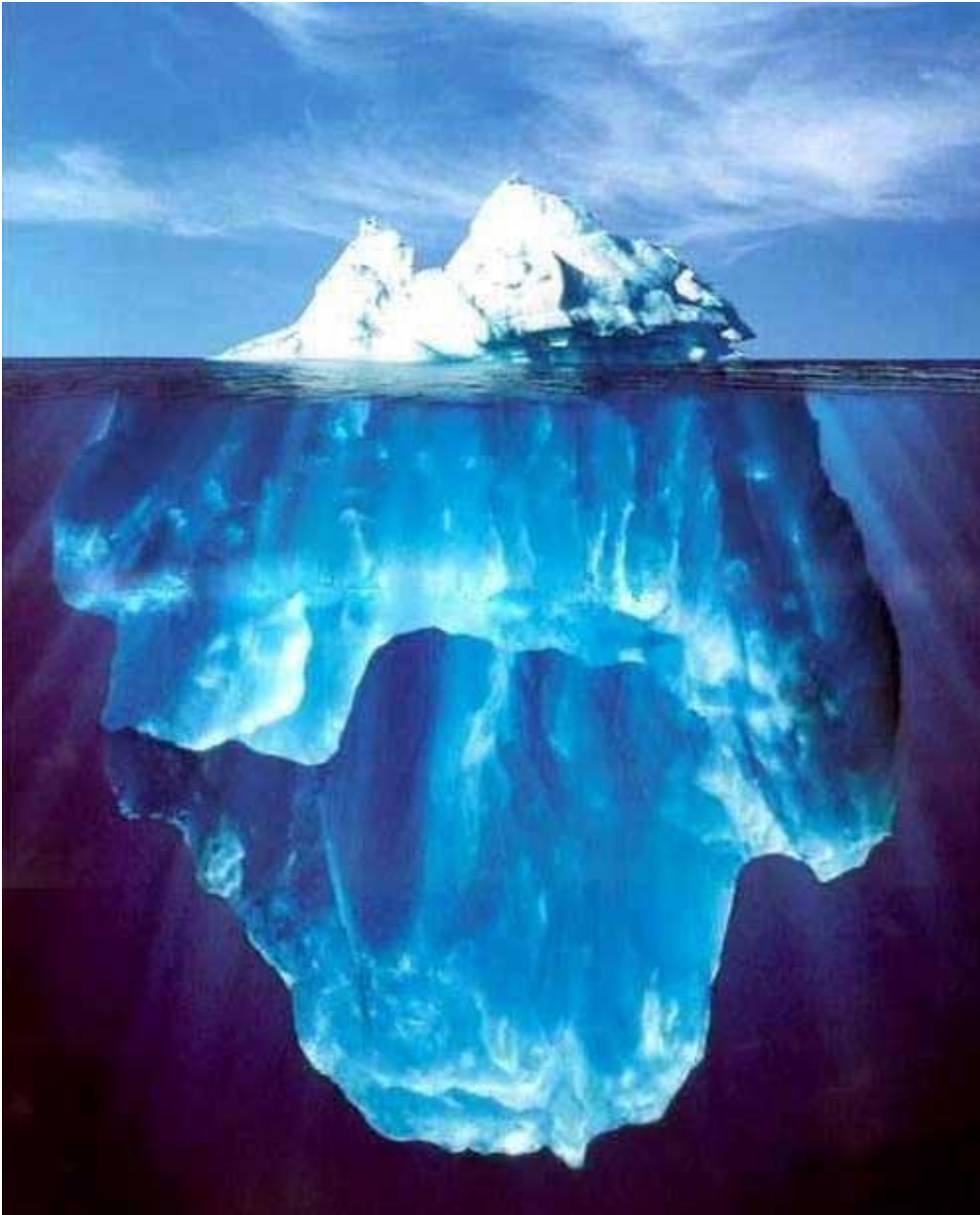
# The interconnect Iceberg



Technical Standards

Notional charging models

# The interconnect iceberg



Technical Standards

Notional charging models

---

Detail of architecture

Mapping functions to physical nodes

Planning rules

Practical commercials

Practical contracts

Transition arrangements

Testing/Trials

Support of legacy services

Support of new services

# NGN PSTN Interconnect State of Play

- **Legacy Interconnect Product (VIC)**
  - Virtualises TDM Local Switch (DLE) Interconnect to Tandems preserving commercial neutrality through systems
  - Ideal for CPs not ready for NGN Interconnect
- **Interim NGN PSTN Emulation**
  - NGN PSTN SIP-I (C7 Encapsulation) mimicking current TDM commercial charging: i.e. regulated network charge control
  - Ensures commercial certainty during migration interregnum
- **Voice Line Access**
  - Product to allow an intelligence-heavy infrastructure-lite CP to provide retail feature differentiation using their own Call Server
- **Future NGN PSTN Interconnect**
  - Subject of discussion at independent NGNuk Industry Group
  - Intended as a commercial model for all NGNs, not just BT

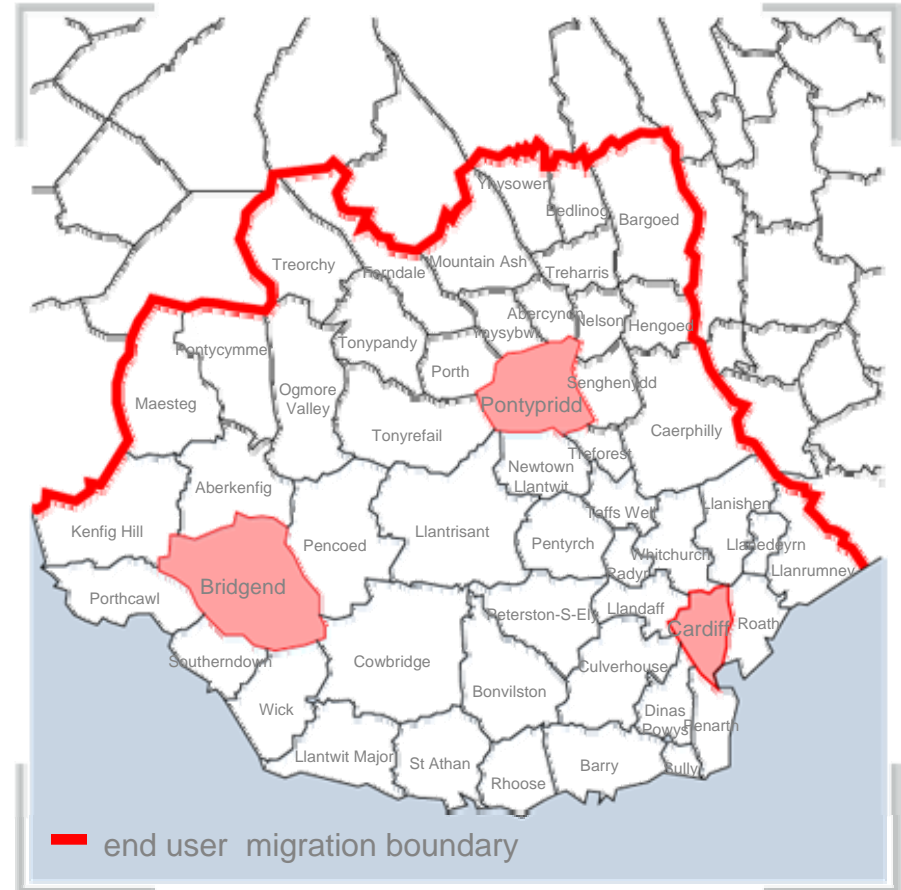
# Planning for 21CN End-User Migration

- Consult21 Working Groups on Migration and Testing
- Open and Transparent Testing Process
- Migration Command and Control (MCC)
- End-User Communication
  - One Website ([www.switchedonuk.org](http://www.switchedonuk.org))
  - One call centre – 0800 030 4000



## 21CN – We've flicked the switch!

- First end-user lines were migrated on 28 November 2006.
- A global first has been notched up in a Welsh village with the first call over the most advanced telephone network in the world.
- It was made by 11 Year Old Laura Wess from Wick in the Vale of Glamorgan,
- Migration of around **350,000** end user lines in the **Cardiff, Bridgend and Pontypridd** area is next.
- Valuable industry insights will **help assure future migration** of 30 million lines across the UK.



# Next Generation Access: Is it Next?

- Need to be clear what is meant by NGA (as opposed to NGN)
  - Is it about rolling out Access Fibre specifically i.e. technology specific or....
  - Is it about rolling out high bandwidth access independent of technology?
  - NGA today is about access bandwidth speed
- But, what services will this higher speed actually deliver?
  - Is this another “solution in search of a problem”
- BT believes the commercial context should be:
  - Can the networks carry the applications people want?
  - Do they reach all of our people?
  - Can people afford to use them?
  - Do those that build them recover their costs?
- So we choose to concentrate on the four things that matter:
  - applications; ubiquity; affordability; commerciality.





# BT's Current View of NGA in the UK

- BT does not believe that there will be a market driven economic case for national or geographically universal NGA fibre deployment for the foreseeable future.
  - But, greenfield and some brownfield sites may cost in using FTTC
  - And we may choose to respond to Public Sector tenders
- NGA deployments need to offer EOI access products
  - In line with the new regulatory framework set out by Ofcom
  - With flexibility where NGA deployment is limited and experimental
- Concerned about perverse outcomes
  - History demonstrates that technology bets, without a commercial driver, rarely succeed
  - Public sector subsidy could launch a new bubble economy



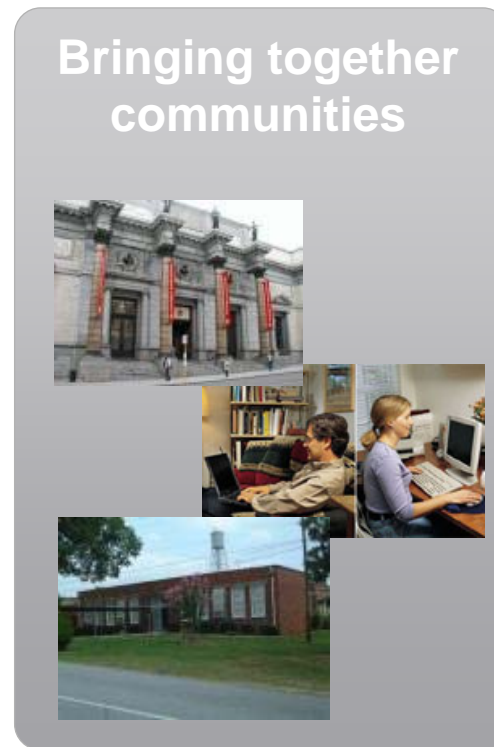


## 21CN – Lessons learnt

- Make it carrier class
- Be open and transparent
- Be fast
- Don't start until you can do it everywhere
- Be global
- Do it



# The Network Enables a Broader Vision



**Transforming business operations, global supply chains, personalised entertainment and social communities**

